

Lincolnshire Dental Strategy

Allan Reid – Consultant in Healthcare Public Health, NHS England Midlands

Our stakeholders

NHS England Midlands

Lincolnshire Integrated Care Board

Lincolnshire County Council

Dental professionals – GDP, Community, Corporate

Non-dental healthcare workers

Healthwatch and patient representation

University of Lincoln

Lincolnshire Care Association



Our journey so far

August- project initiation and individual scoping conversations to develop key strategic themes

September- Teams online workshops – thinking about our local assets, resources and capabilities – Interim paper

November- In-person stakeholder workshop- develop desired outcomes and what's need to achieve them

Draft strategy developed, sense checked and finalised

Logic model methodology

INPUTS or STRUCTURES

- what resources needs to be put in place to be able to start generating action and activities?
- e.g. staff, funding, buildings, services, groups/coalitions/alliances, governance, existing plans, needs assessment or existing projects/initiatives

ACTIVITIES

- How do we use these inputs what actions need to be taken with them?
- e.g. training delivery, service mapping, intelligence and information gathering, engagement and relationship building, collaboratives formed etc

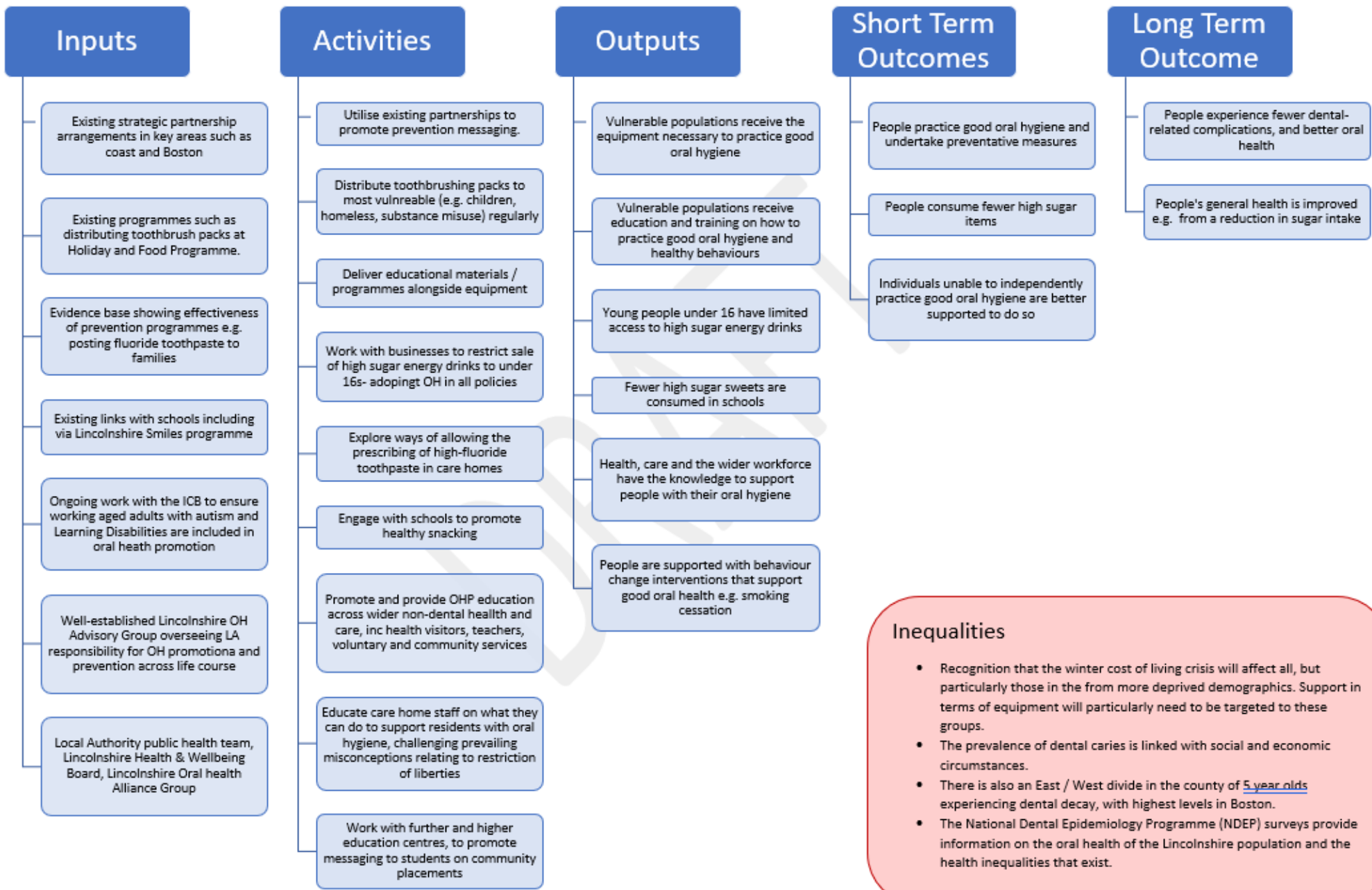
OUTPUTS

- What are the products that will be delivered from completing our activities? What is needed to deliver an outcome?
- e.g. number of staff trained/sessions delivered, number of sites identified, number of signed up staff/practices/number of schools engaged and delivering-with OHI and prevention, % of vulnerable groups receiving care, PCNs with lead dental representation etc

OUTCOMES

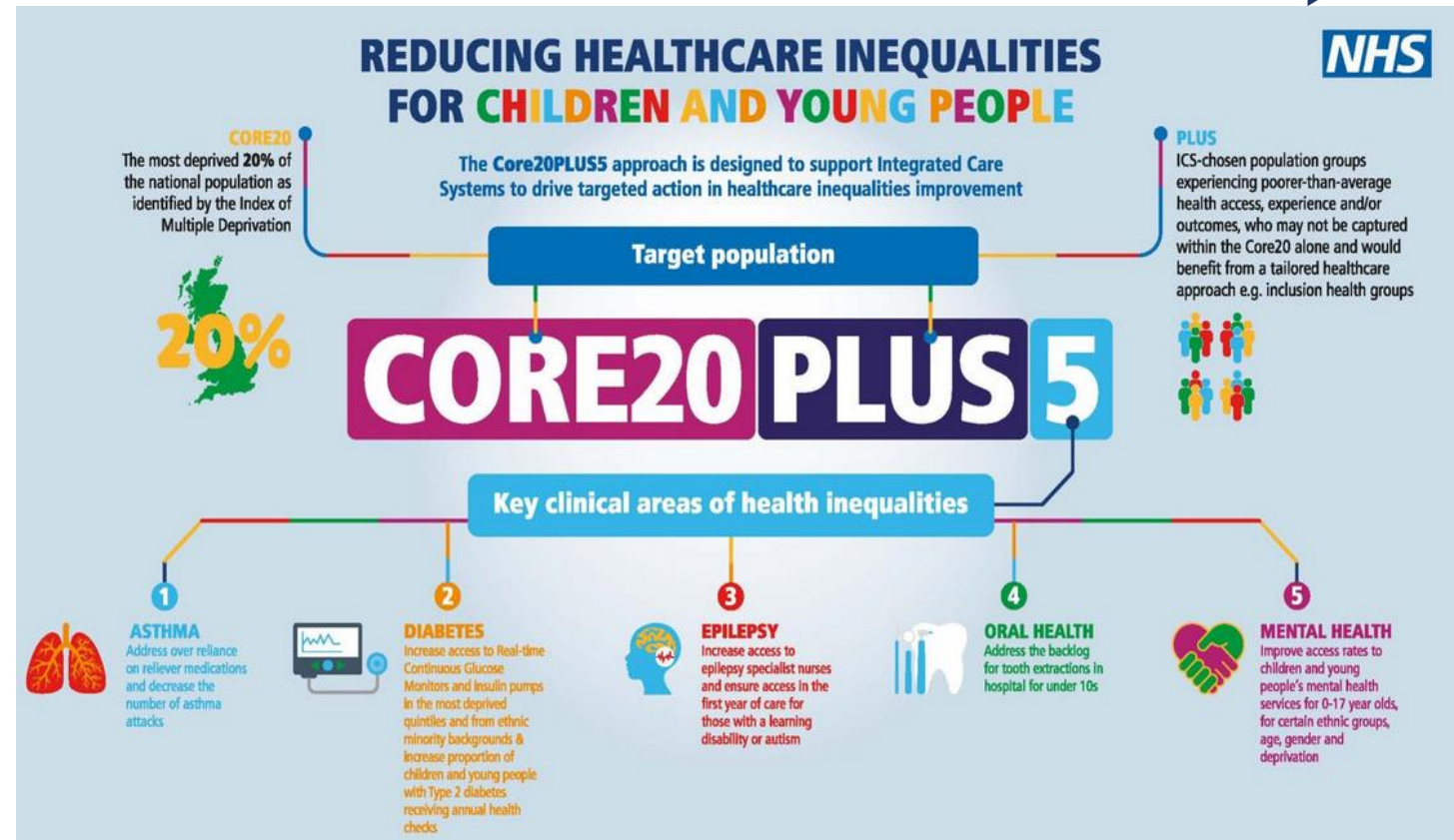
- what end-results do we want to achieve, to support each theme?
- Should be SMART (specific, measurable, achievable, relevant, with timescale)
- Over 1, 2 and 3 years
- e.g. increase staff retention, increase in % accessing care, improvement in OH indicators in our most deprived areas, reduced tooth decay in children, reduced child tooth extractions, improved care pathways integration

Theme 3: Prevention



Golden thread and key enablers

- Addressing inequalities in dental care access and oral health outcomes is the 'golden thread' running through all four themes



Enablers of our strategy

Data, intelligence,
insights, evidence and
evaluation

Leadership and
engagement- a
collective 'can-do, will-
do' effort

Culture change- valuing
and maximising the
potential and inclusion
of our people



Lincoln workshop- 30 November 2022

Lincolnshire patients and the public at the heart of everything we do

Identifying and taking positive action of health inequalities in oral health and dental care services- guided by CORE20PLUS5

Developing the dental workforce

Enrich the well-being, capability and engagement of the dental workforce in Lincolnshire

Access to dental services

Improve access, experience and quality of dental care for the Lincolnshire population through continued investment in access improvement schemes, innovation, use of best practice, and eliminating waste

Step-up of prevention

Improve population health, oral health and wellbeing through a greater focus on prevention

Integration of oral health

Create better integration between oral health and general health and wellbeing, making good oral health everyone's business across Lincolnshire

Maximising the use of evidence, data and intelligence to improve oral health and access to dental services

Enhancing leadership and creating an environment that fosters developing a culture of pride and accomplishment within all members of dental teams

Classification: Official



Page 12



Lincolnshire Dental Strategy 2023-2026 - Write-Up (Draft Themes)

30 December 2022

Next steps:



Final strategy sign off



Set up implementation group



Staged and detailed
implementation and delivery plan

This page is intentionally left blank